

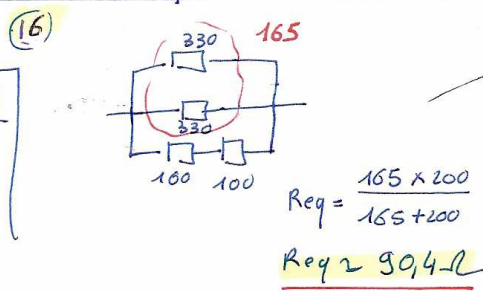
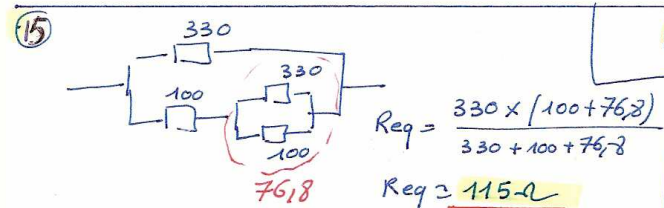
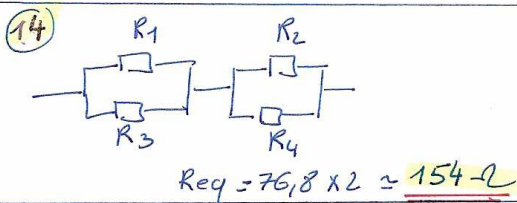
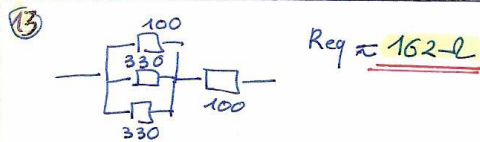
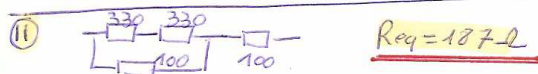
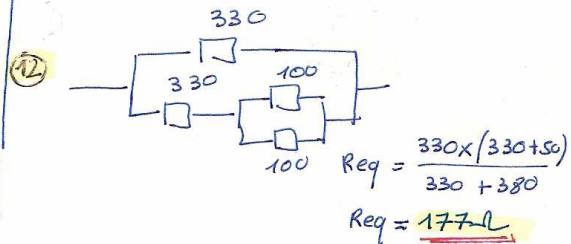
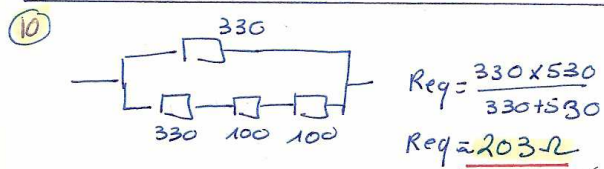
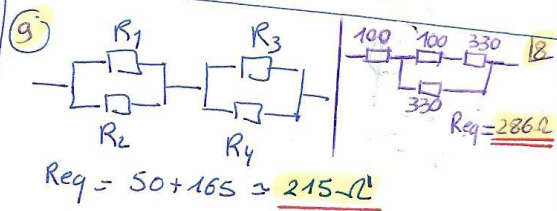
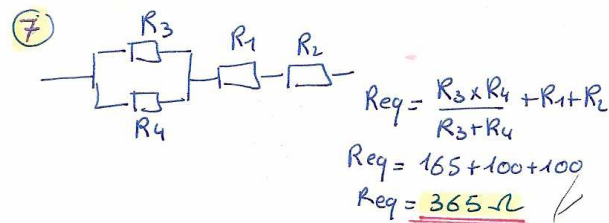
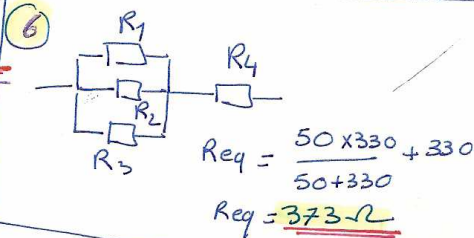
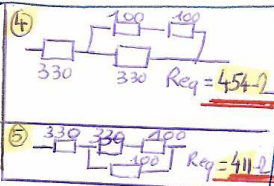
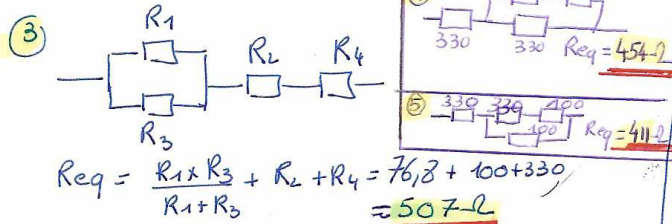
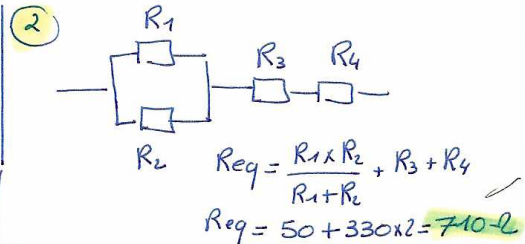
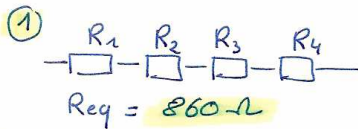
# Jeu des résistances

M. P. J

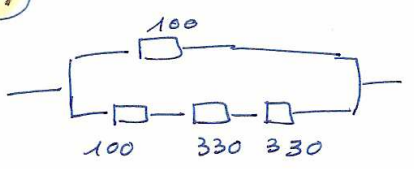
## Solutions

$$R_1 = R_2 = 100\ \Omega$$

$$R_3 = R_4 = 330\ \Omega$$

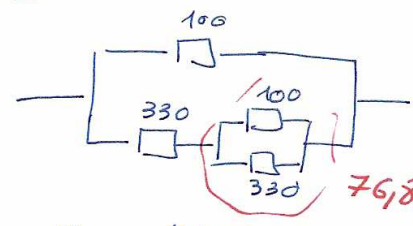


17



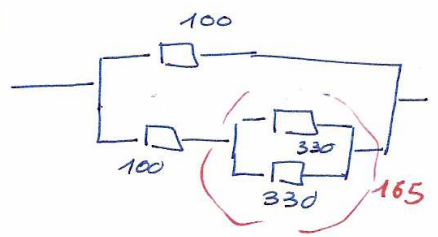
$$R_{eq} = \frac{100 \times 760}{100 + 760} \approx \underline{\underline{88,4 \Omega}}$$

18



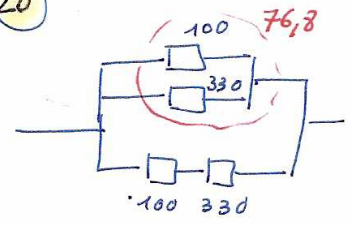
$$R_{eq} = \frac{100 \times 406,8}{100 + 406,8} \approx \underline{\underline{80,3 \Omega}}$$

19



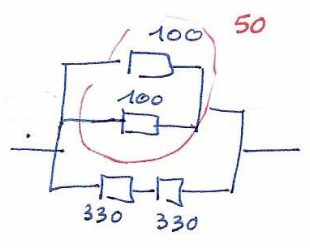
$$R_{eq} \approx \frac{100 \times (100 + 165)}{100 + 265} \approx \underline{\underline{73,6 \Omega}}$$

20



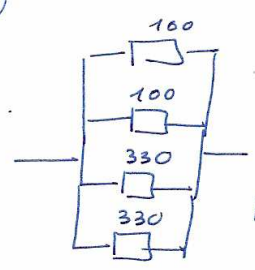
$$R_{eq} \approx \frac{76,8 \times 430}{76,8 + 430} \approx \underline{\underline{65,2 \Omega}}$$

21



$$R_{eq} = \frac{50 \times 660}{50 + 660} \approx \underline{\underline{46,5 \Omega}}$$

22



$$R_{eq} \approx \underline{\underline{38,4 \Omega}}$$